

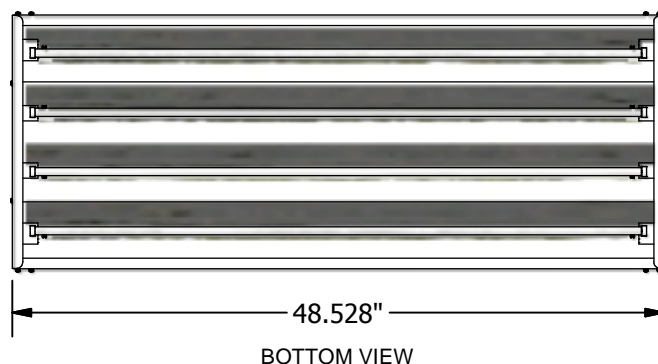
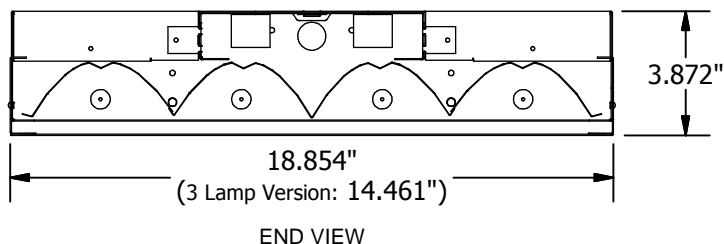
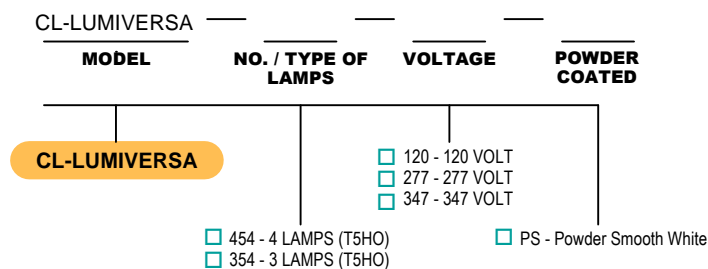
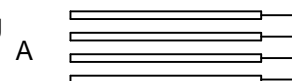
CL-LUMIVERSA (3~4 Lamp T5HO)**CUSTOM**
LIGHTING LTD.**High-Bay Fixture**

Ideal for both high and mid-bay applications, the CL-LUMIVERSA (3 or 4 Lamp) is engineered to utilize three or four T5HO / T8 / T8VHO lamps and a highly efficient specular Miro IV reflector. Features include:

- Luminaire housing made from galvanized or post-painted steel
- Numerous mounting capabilities: chain, aircraft cable, V-hook, and surface (with optional mounting kit)
- Narrow ballast cavity with venting for optimal heat dissipation
- Exceptional optical performance in a choice of narrow, medium, or wide distribution patterns
- Multiple switching capable: 2 lamps on or 3 or 4 lamps on
- Optional clear polycarbonate Lexan lens or post-painted wireguard to protect lamps and reflector
- Optional reflector uplighting



CL-LUMIVERSA (4 Lamp T5HO White)

All fixtures **CSA** approved.**Ordering Logic** (Choose from available options)**Multiple Switching Wiring Diagram****Options****Multiple Switching** (see right)

- ☐ A (No Switching)
☐ B (Standard)
☐ C

Light Distribution

- ☐ Narrow
☐ Medium
☐ Wide (Standard)

Fixture Colour

- ☐ Galvanized (Standard)
☐ White

Surface Mounting Kit

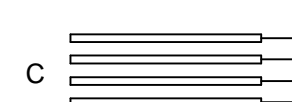
- ☐ None (Standard)
☐ Include Surface Mounting Kit

Lens / Wireguard

- ☐ None (Standard)
☐ Clear Acrylic Lens
☐ Clear Lexan Lens
☐ Wireguard

Reflector Uplighting

- ☐ None (Standard)
☐ Uplighting



Custom Lighting Ltd. 7923 Coronet Road, Edmonton, AB, T6E 4N7

Tel: (780) 463-8014 Fax: (780) 463-2216 Email: sales@customlightingltd.com www.customlightingltd.com