

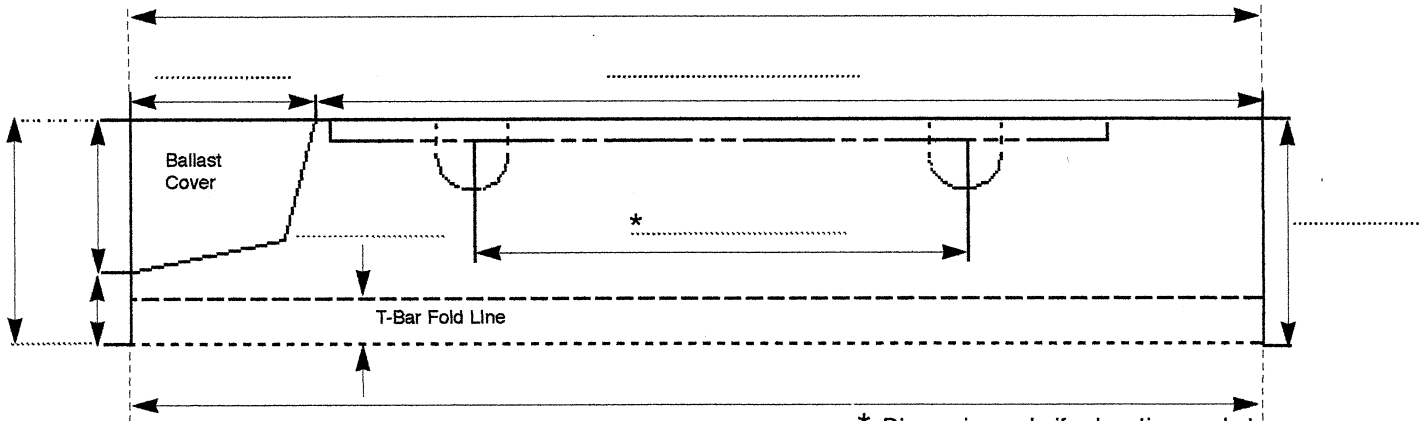
2 X 4 - TYPE D SIDE MOUNT BALLAST

CUSTOM LIGHTING LTD.

9734 - 61 AVE.
 EDMONTON, ALBERTA T6E-5P6
 PHONE (780)463-8014
 FAX (780)463-2216

FIXTURE TYPE TAG #

One Drawing per Fixture Type



* Dimension only if relocating sockets and reusing existing brackets.

Circle/Fill In Appropriate Information

DATE: _____
 CONTACT: _____
 PHONE: _____ FAX: _____
 PROJECT: _____

EXISTING FIXTURE MODEL & TYPE
 Manufacturer: _____
 Model: _____

Recessed T-Bar Surface Mount
 Regressed Wrap Around
 Strip Suspended By: _____

Fixture Size:
 1x1 1x2 1x3 1x4 1x8 2x2 2x4 2x8 3x3 4x4

Lamps per Fixture: 1 2 3 4

Ballasts per Fixture: .5 1 1.5 2

Ballast Type: Standard
 Energy Saver
 Electronic

Lens: Prismatic
 Paracube
 Parabolic
 Wireguard

Other: _____

System Voltage:
 120 240 277 347

RETROFIT	
<p>REFLECTOR Quantity Required _____ Reflector Type: Spec + Anolux I Miro IV</p>	<p>LENS Hinged Lens Lay In Lens Lay In Lense (Framed) If Lay In, Clearance Required To Install & Remove Lens: 0.5" 1.0" 1.5"</p>
<p>SOCKETS New Reuse Sockets Number of Sockets 1 2 3 4 Socket Type: Long(1.18") Short(.875") Special _____</p>	<p>LAMPS Quantity To Be Used In Fixture: 1 2 3 4 Lamp Type: _____ Wattage: _____</p>
<p>BRACKETS Will Existing Bracket Allow Relocation of Sockets Yes No If Yes, Then Distance From Centerline of Fixture To Relocated Socket Location: 4.5" 5.0" 5.5" Other _____ Socket Bracket Easily Removable Yes No If No, Then Distance Between Socket Bracket (usually 44" - 46") _____ Depth of Sockets _____ Distance Between Sockets _____ (A) Distance from Left Socket to Left Side of Fixture _____ (B) Distance from Right Socket to Right Side of Fixture _____ (C) NOTE: Distance A+B+C= Fixture Width as per illustration</p>	<p>BALLAST Voltage: 120 240 277 347 1 Lamp 2lamp 3Lamp 4Lamp</p>
<p>BALLAST COVER</p> <div style="text-align: center;"> </div> <p>Remove Ballast Cover on Retrofit Yes No</p> <div style="text-align: center;"> </div>	