

2 X 4 - TYPE C SIDE MOUNT BALLAST

CUSTOM LIGHTING LTD.

9734 - 61 AVE.

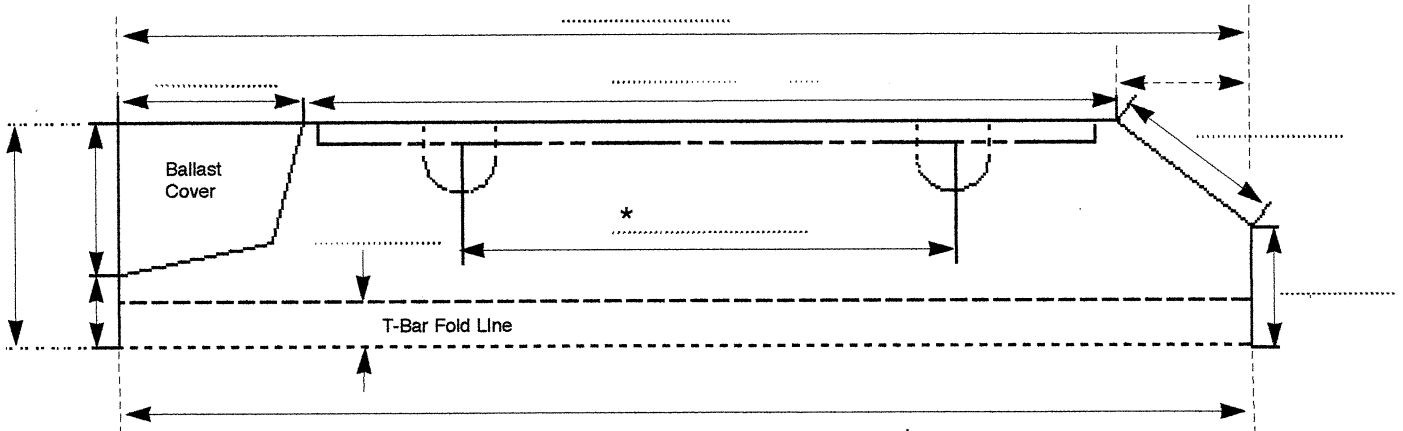
EDMONTON, ALBERTA T6E-5P6

PHONE (780)463-8014

FAX (780)463-2216

FIXTURE TYPE TAG #

One Drawing per Fixture Type



* Dimension only if relocating sockets and reusing existing brackets.

Circle/Fill In Appropriate Information

DATE: _____
 CONTACT: _____
 PHONE: _____ FAX: _____
 PROJECT: _____

EXISTING FIXTURE MODEL & TYPE

Manufacturer: _____
 Model: _____

Recessed T-Bar Surface Mount
 Regressed Wrap Around
 Strip Suspended By:

Fixture Size:
 1x1 1x2 1x3 1x4 1x8 2x2 2x4 2x8 3x3 4x4

Lamps per Fixture: 1 2 3 4

Ballasts per Fixture: .5 1 1.5 2

Ballast Type: Standard
 Energy Saver
 Electronic

Lens: Prismatic
 Paracube
 Parabolic
 Wireguard

Other: _____

System Voltage:
 120 240 277 347

RETROFIT

REFLECTOR

Quantity Required _____
 Reflector Type:
 Spec + Anolux I Miro IV

LENS

Hinged Lens
 Lay In Lens
 Lay In Lens (Framed)
 If Lay In, Clearance Required To
 Install & Remove Lens:
 0.5" 1.0" 1.5"

SOCKETS

New Reuse Sockets
 Number of Sockets 1 2 3 4
 Socket Type: Long(1.18") Short(.875")
 Special _____

LAMPS

Quantity To Be Used In Fixture:
 1 2 3 4
 Lamp Type: _____
 Wattage: _____

BRACKETS

Will Existing Bracket Allow Relocation
 of Sockets Yes No

If Yes, Then
 Distance From Centerline of Fixture
 To Relocated Socket Location:
 4.5" 5.0" 5.5" Other _____

Socket Bracket Easily Removable
 Yes No

If No, Then
 Distance Between Socket Bracket
 (usually 44" - 46") _____

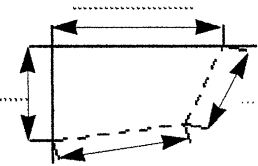
Depth of Sockets _____
 Distance Between Sockets _____ (A)
 Distance from Left Socket
 to Left Side of Fixture _____ (B)
 Distance from Right Socket
 to Right Side of Fixture _____ (C)

NOTE: Distance A+B+C= Fixture Width
 as per illustration

BALLAST

Voltage:
 120 240 277 347
 1 Lamp 2lamp 3Lamp 4Lamp

BALLAST COVER



Remove Ballast Cover on Retrofit
 Yes No

