

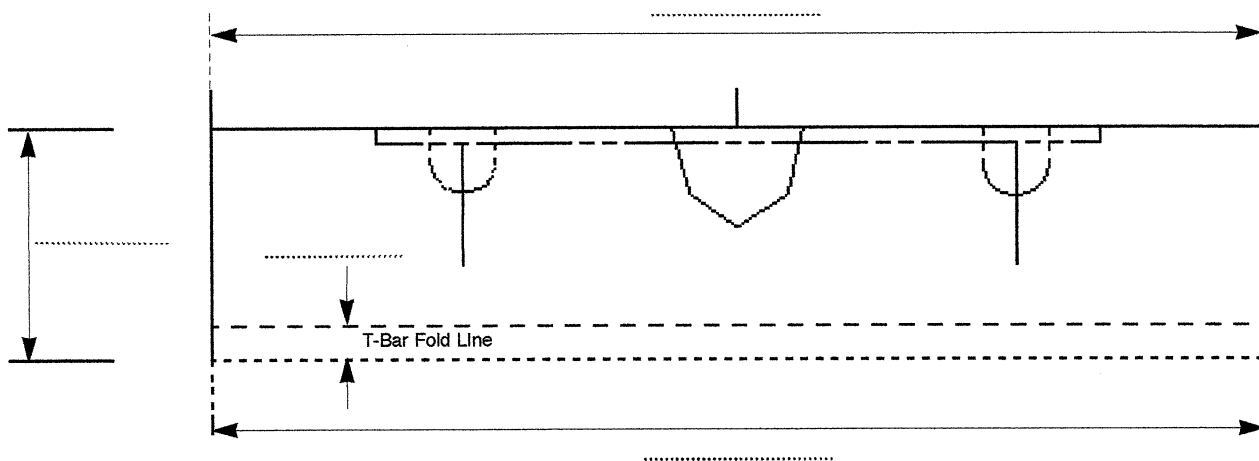
# 1 X 4 - TYPE B CENTER MOUNT BALLAST

<b>FIXTURE TYPE TAG #</b>

## CUSTOM LIGHTING LTD.

1734 - 61 AVE.  
 EDMONTON, ALBERTA T6E-5P6  
 PHONE (780)463-8014  
 FAX (780)463-2216

One Drawing per Fixture Type



Circle/Fill In Appropriate Information

DATE: _____ CONTACT: _____ PHONE: _____ FAX: _____ PROJECT: _____ _____ <hr/> <b>EXISTING FIXTURE MODEL &amp; TYPE</b> Manufacturer: _____ Model: _____  Recessed T-Bar    Surface Mount Regressed        Wrap Around Strip                Suspended By: _____  Lamps per Fixture:    1    2    3    4 Ballasts per Fixture: .5    1    1.5    2  Ballast Type:    Standard Energy Saver Electronic  Lens:             Prismatic Paracube Parabolic Wireguard  Other: _____  System Voltage: 120    240    277    347	<b>RETROFIT</b>	
	<b>REFLECTOR</b> Quantity Required _____ Reflector Type: Spec +    Anolux I    Miro IV	<b>LENS</b> Hinged Lens Lay In Lens Lay In Lense (Framed) If Lay In, Clearance Required To Install & Remove Lens: 0.5" 1.0" 1.5"
	<b>SOCKETS</b> New        Reuse Sockets Number of Sockets 1 2 3 4 Socket Type: Long(1.18") Short(.875") Special _____	<b>LAMPS</b> Quantity To Be Used In Fixture: 1    2 Lamp Type: _____ Wattage: _____
	<b>BRACKETS</b> Will Existing Bracket Allow Relocation of Sockets    Yes    No If Yes, Then Distance From Centerline of Fixture To Relocated Socket Location: 4.5" 5.0" 5.5" Other _____ Socket Bracket Easily Removable Yes    No If No, Then Distance Between Socket Bracket (usually 44" - 46") _____	<b>BALLAST</b> Voltage: 120 240 277 347 1 Lamp 2lamp 3Lamp 4Lamp