

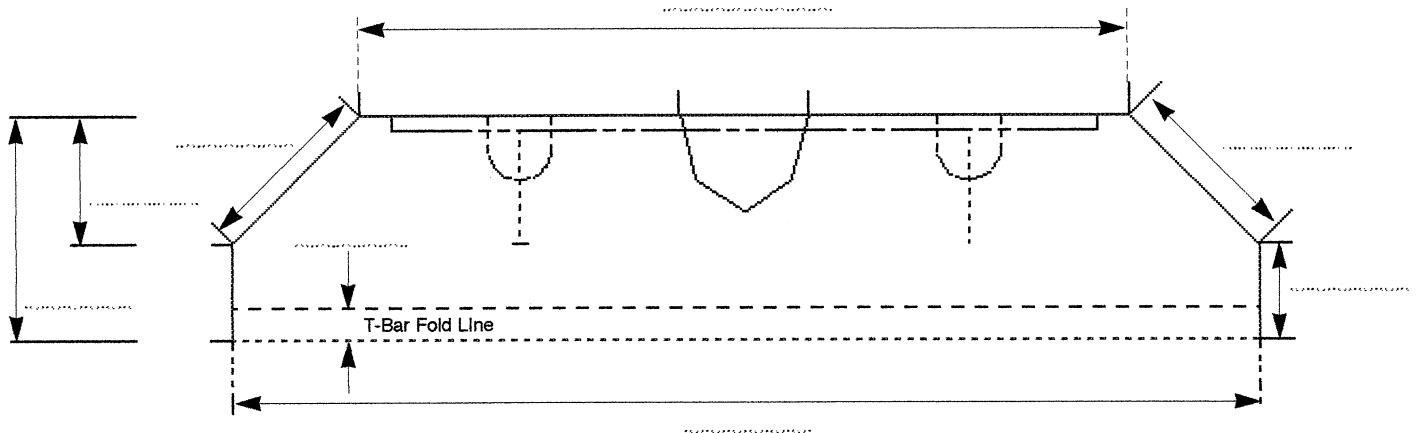
1 X 4 - TYPE A CENTER MOUNT BALLAST

CUSTOM LIGHTING LTD.

8734 - 61 AVE.
 EDMONTON, ALBERTA T6E-5P6
 PHONE (780)463-8014
 FAX (780)463-2216

FIXTURE TYPE TAG #

One Drawing per Fixture Type



Circle/Fill In Appropriate Information

<p>DATE: _____</p> <p>CONTACT: _____</p> <p>PHONE: _____ FAX: _____</p> <p>PROJECT: _____</p> <hr/> <p>EXISTING FIXTURE MODEL & TYPE</p> <p>Manufacturer: _____</p> <p>Model: _____</p> <p>Recessed T-Bar Surface Mount Regressed Wrap Around Strip Suspended By:</p> <p>_____</p> <p>Lamps per Fixture: 1 2 3 4</p> <p>Ballasts per Fixture: .5 1 1.5 2</p> <p>Ballast Type: Standard Energy Saver Electronic</p> <p>Lens: Prismatic Paracube Parabolic Wireguard</p> <p>Other: _____</p> <p>System Voltage: 120 240 277 347</p>	<p>RETROFIT</p> <p>REFLECTOR Quantity Required _____ Reflector Type: Spec + Anolux I Miro IV</p> <p>SOCKETS New Reuse Sockets Number of Sockets 1 2 3 4 Socket Type: Long (1.18") Short (.875") Special _____</p> <p>BRACKETS Will Existing Bracket Allow Relocation of Sockets Yes No If Yes, Then Distance From Centerline of Fixture To Relocated Socket Location: 4.5" 5.0" 5.5" Other _____</p> <p>Socket Bracket Easily Removable Yes No If No, Then Distance Between Socket Bracket (usually 44" - 46") _____</p>	<p>LENS Hinged Lens Lay In Lens Lay In Lense (Framed) If Lay In, Clearance Required To Install & Remove Lens: 0.5" 1.0" 1.5"</p> <p>LAMPS Quantity To Be Used In Fixture: 1 2 Lamp Type: _____ Wattage: _____</p> <p>BALLAST Voltage: 120 240 277 347 1 Lamp 2lamp 3Lamp 4Lamp</p>
---	---	---