

## CL-LED-TRK-K15-2ft LED Troffer Retrofit Kit

### Metric and Custom sizes available

#### Construction

22 gauge PFW steel high gloss fixture white finish

#### Colour Rendering Index

> 80 CRI

#### Lumen Maintenance

> 50,000 (L70)

#### Input Watts (2 ROWS)

20W - 2800lm | 29W - 4400lm | 54W - 8000lm | 75W - 12000lm

#### Voltage

120/277V | 347V

#### Correlated Colour Temperature Options (CCT)

3000K | 3500K | 4000K | 5000K

#### Controls

0-10V Dimming (standard)

Operating Temperature

-40°C to 40°C

#### LED Array & Driver

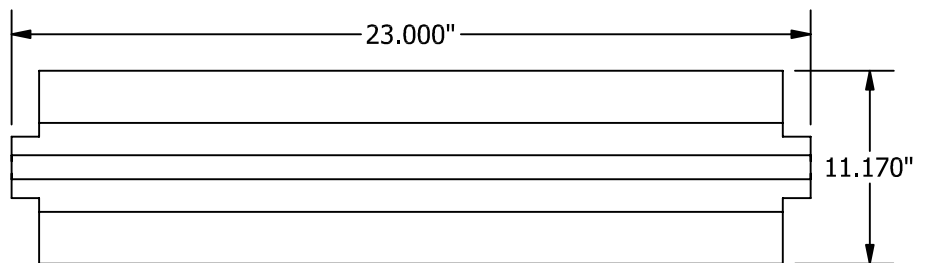
- > Philips Advance Xitanium Linear LED Driver with SimpleSet technology, 0-10V Dimming
- > Philips Fortimo LV1 & LV3 LED Arrays

#### Certifications

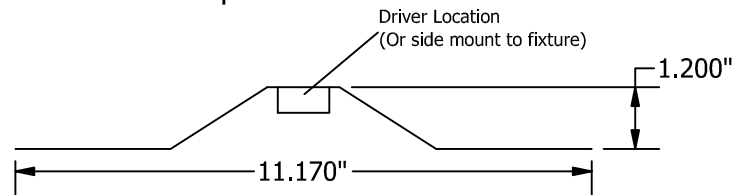


#### Warranty

> 10 years



Top View



End View

### Ordering Logic (Choose from available options)

