

CUSTOM LIGHTING LTD.

M A N U F A C T U R I N G • D E S I G N • T E C H N O L O G Y

LS-UHB

T5HO Ultra High-Bay Fixture

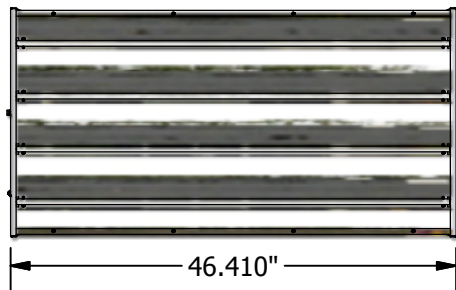
Recommended for very high-bay applications, the LS-UHB is engineered to utilize four 54w T5HO lamps and a high-reflectance Miro IV specular reflector. It is designed as an energy-efficient replacement for Metal-Halide luminaires. Two LS-UHB fixtures have a light output comparable to one 1000w MH fixture at over 50% energy savings.

The LS-UHB has a strong yet light aluminum housing. Lamps are protected by a clear Lexan acrylic lens. Lamps and ballasts can be maintained with removable access plates. The LS-UHB was designed for suspension mounting applications.

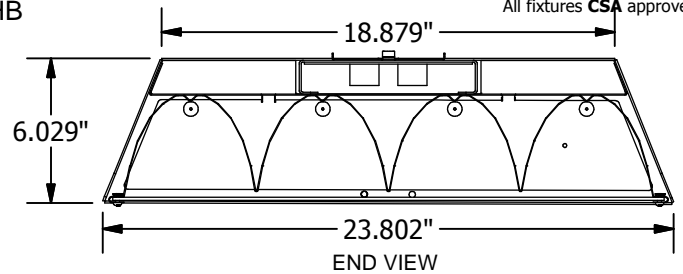


LS-UHB

All fixtures CSA approved.

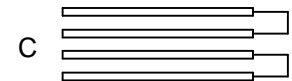
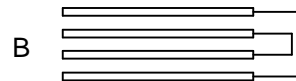
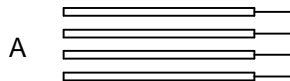


46.410"
BOTTOM VIEW

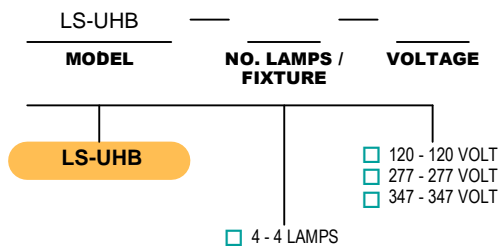


18.879"
6.029"
23.802"
END VIEW

Multiple Switching Wiring Diagram



Ordering Logic (Choose from available options)



Options

Multiple Switching (see above)

- A (No Switching)
- B (Standard)
- C



Custom Lighting Ltd. 7923 Coronet Road, Edmonton, AB, T6E 4N7
 Tel: (780) 463-8014 Fax: (780) 463-2216 Email: sales@customlightingltd.com www.customlightingltd.com