

CUSTOM LIGHTING LTD.

M A N U F A C T U R I N G • D E S I G N • T E C H N O L O G Y

CLHI5BS (8 or 12 Lamp) T5HO Paint Booth Fixture

Ideal for humid or damp indoor locations such as pools and paint booths, the hinged-frame CLHI5BS is engineered to utilize eight or twelve 54w T5HO lamps and high-reflectance Miro IV specular reflectors.

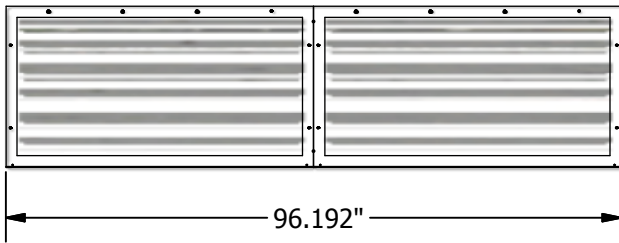
Housing built from 18 gauge steel and powder-coated after fabrication. The gasketed lexan lenses and frames prevent moisture from condensing inside the fixture. The hinged frames allows easy lamp access and maintenance. On the top of the housing, quick access plates assist installation.

Designed for surface or chain-mounting applications. Can be adapted for aircraft cable and adjustable yoke mounting.

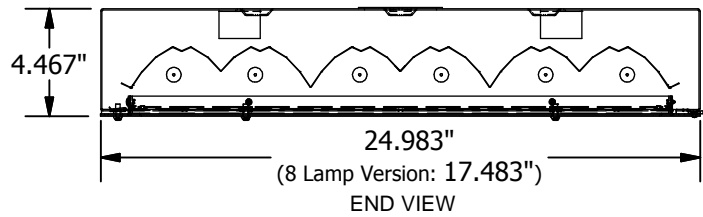


CLHI5BS-Paint Booth (12 Lamp)

All fixtures CSA approved.

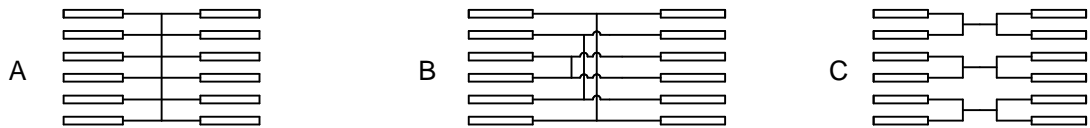


BOTTOM VIEW



END VIEW

Multiple Switching Wiring Diagram



Ordering Logic (Choose from available options)

CLHI5BS	FINISH	REFLECTOR MATERIAL	NO. LAMPS / FIXTURE	PAINT BOOTH	HINGED LENS	MULTIPLE SWITCHING	VOLTAGE
CLHI5BS	<input type="checkbox"/> PS - POWDER SMOOTH	<input type="checkbox"/> M - MIRO IV <input type="checkbox"/> A - ANOLUX-1 <input type="checkbox"/> A90 - A90 White	<input type="checkbox"/> 8 - 8 LAMPS <input type="checkbox"/> 12 - 12 LAMPS	<input type="checkbox"/> PB - PAINT BOOTH (Suitable for Damp Indoor Locations)	<input type="checkbox"/> HDLX - HINGED CLEAR LEXAN <input type="checkbox"/> HDAC - HINGED CLEAR ACRYLIC <input type="checkbox"/> HDWL - HINGED WHITE LEXAN <input type="checkbox"/> HDWA - HINGED WHITE ACRYLIC	<input type="checkbox"/> A (None) <input type="checkbox"/> B (Rows 1/6, 2/5, 3/4) <input type="checkbox"/> C (Standard)	<input type="checkbox"/> 1 - 120 VOLT <input type="checkbox"/> 2 - 277 VOLT <input type="checkbox"/> 3 - 347 VOLT



Custom Lighting Ltd. 7923 Coronet Road, Edmonton, AB, T6E 4N7
 Tel: (780) 463-8014 Fax: (780) 463-2216 Email: sales@customlightingltd.com www.customlightingltd.com