

CL-LUMIVERSA (4 Lamp T5HO)

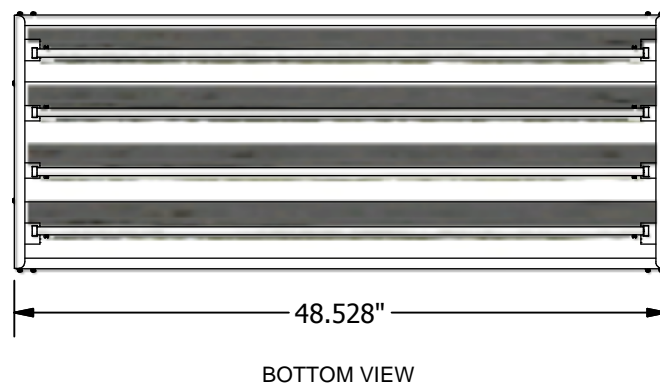
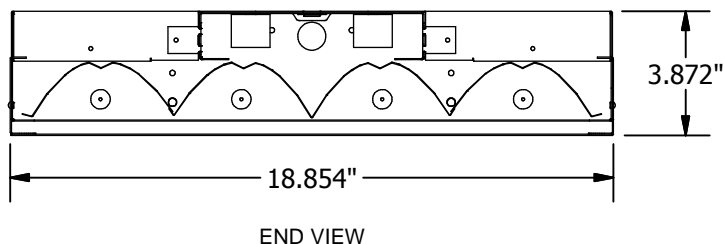
High-Bay Fixture

Ideal for both high and mid-bay applications, the CL-LUMIVERSA (4 Lamp) is engineered to utilize four T5HO / T8 / T8VHO lamps and a highly efficient specular Miro IV reflector. Features include:

- Luminaire housing made from galvanized or post-painted steel
- Numerous mounting capabilities: chain, aircraft cable, V-hook, and surface (with optional mounting kit)
- Narrow ballast cavity with venting for optimal heat dissipation
- Exceptional optical performance in a choice of narrow, medium, or wide distribution patterns
- Multiple switching capable: 2 lamps or 4 lamps on
- Optional clear polycarbonate Lexan lens or post-painted wireguard to protect lamps and reflector
- Optional reflector uplighting



CL-LUMIVERSA (4 Lamp T5HO White)

All fixtures **CSA** approved.

Ordering Logic (Choose from available options)

CL-LUMIVERSA ———

MODEL	NO. / TYPE OF LAMPS	VOLTAGE
-------	---------------------	---------

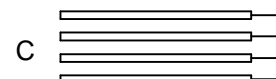
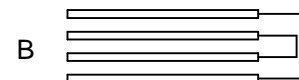
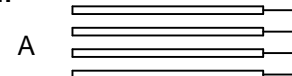
CL-LUMIVERSA

- ☐ 120 - 120 VOLT
- ☐ 277 - 277 VOLT
- ☐ 347 - 347 VOLT

- ☐ 454 - 4 LAMPS (T5HO)
- ☐ 432 - 4 LAMPS (T8)
- ☐ 484 - 4 LAMPS (T8VHO) *

* NOTE: T8VHO only offered in 277V or 347V configurations.

Multiple Switching Wiring Diagram



Options

Multiple Switching (see right)

- ☐ A (No Switching)
- ☐ B (Standard)
- ☐ C

Light Distribution

- ☐ Narrow
- ☐ Medium
- ☐ Wide (Standard)

Fixture Colour

- ☐ Galvanized (Standard)
- ☐ White

Surface Mounting Kit

- ☐ None (Standard)
- ☐ Include Surface Mounting Kit

Lens / Wireguard

- ☐ None (Standard)
- ☐ Clear Acrylic Lens
- ☐ Clear Lexan Lens
- ☐ Wireguard

Reflector Uplighting

- ☐ None (Standard)
- ☐ Uplighting